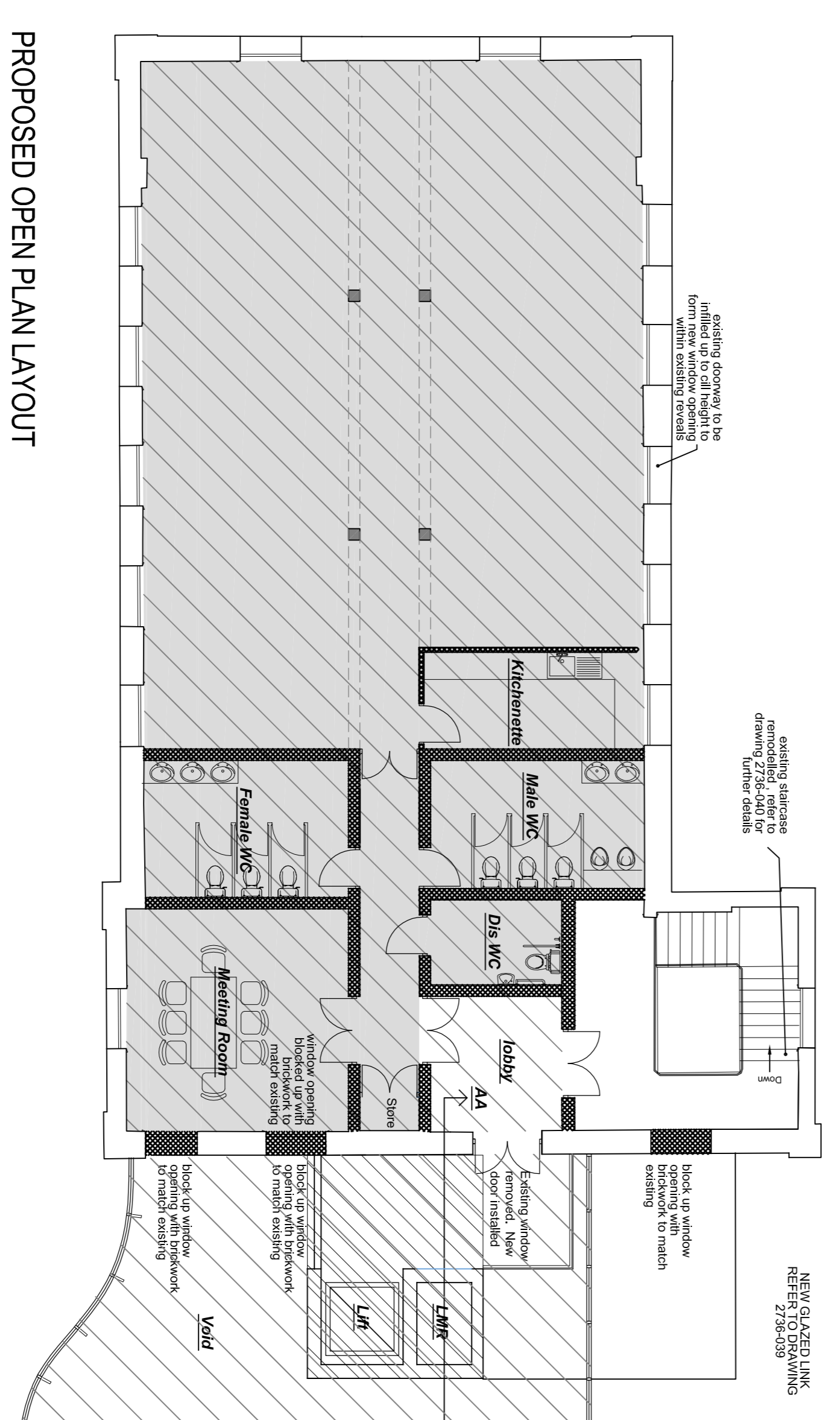


### Proposed Second Floor Plan

- Key**
- Office Suite Four - Approx 240m<sup>2</sup>
  - Office Suite One Second Floor - Approx 344m<sup>2</sup>

N.B. INTERNAL LAYOUTS SHOWN ARE INDICATIVE ONLY. FIT OUT LAYOUT IS SUBJECT TO A FURTHER APPLICATION.

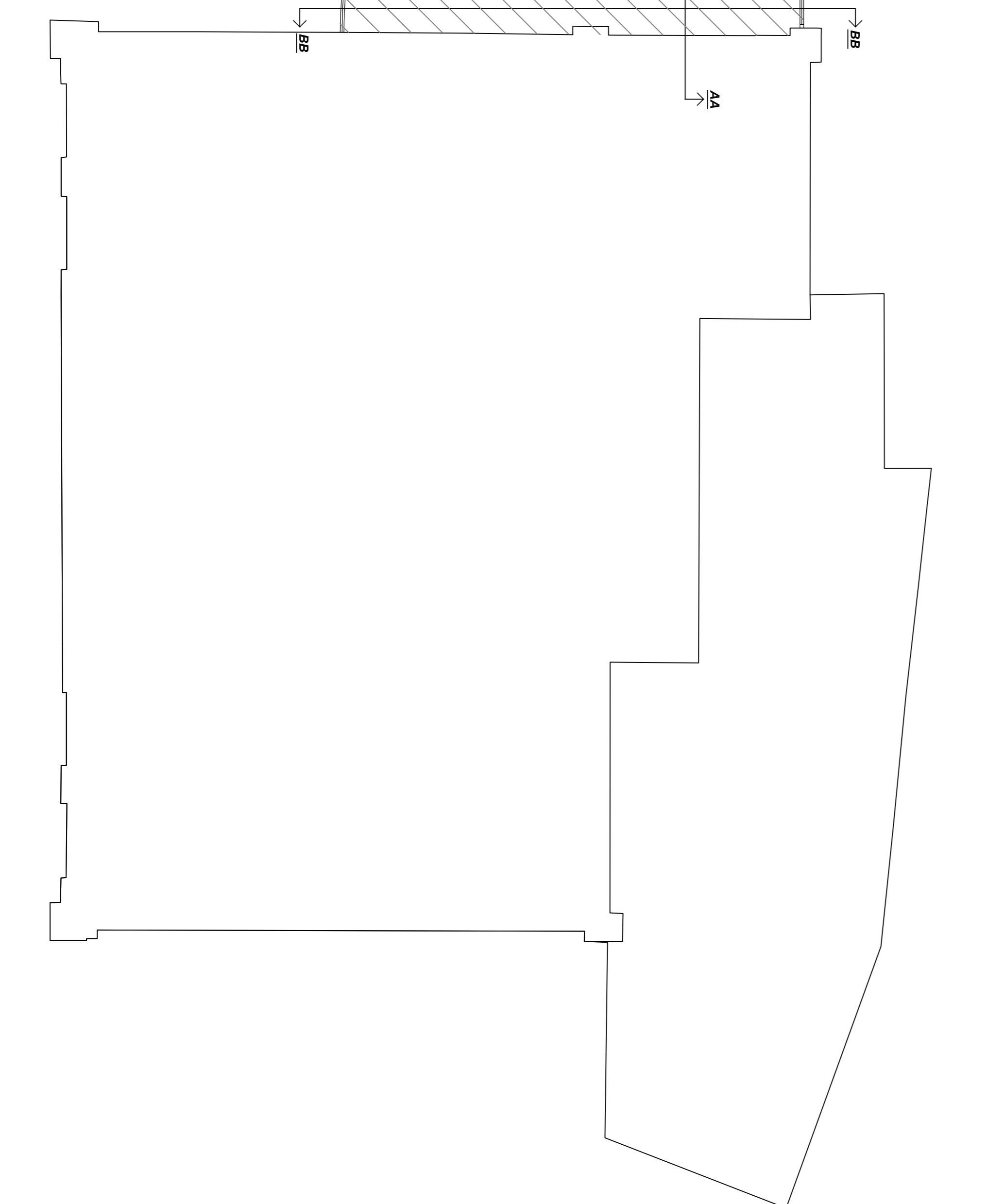
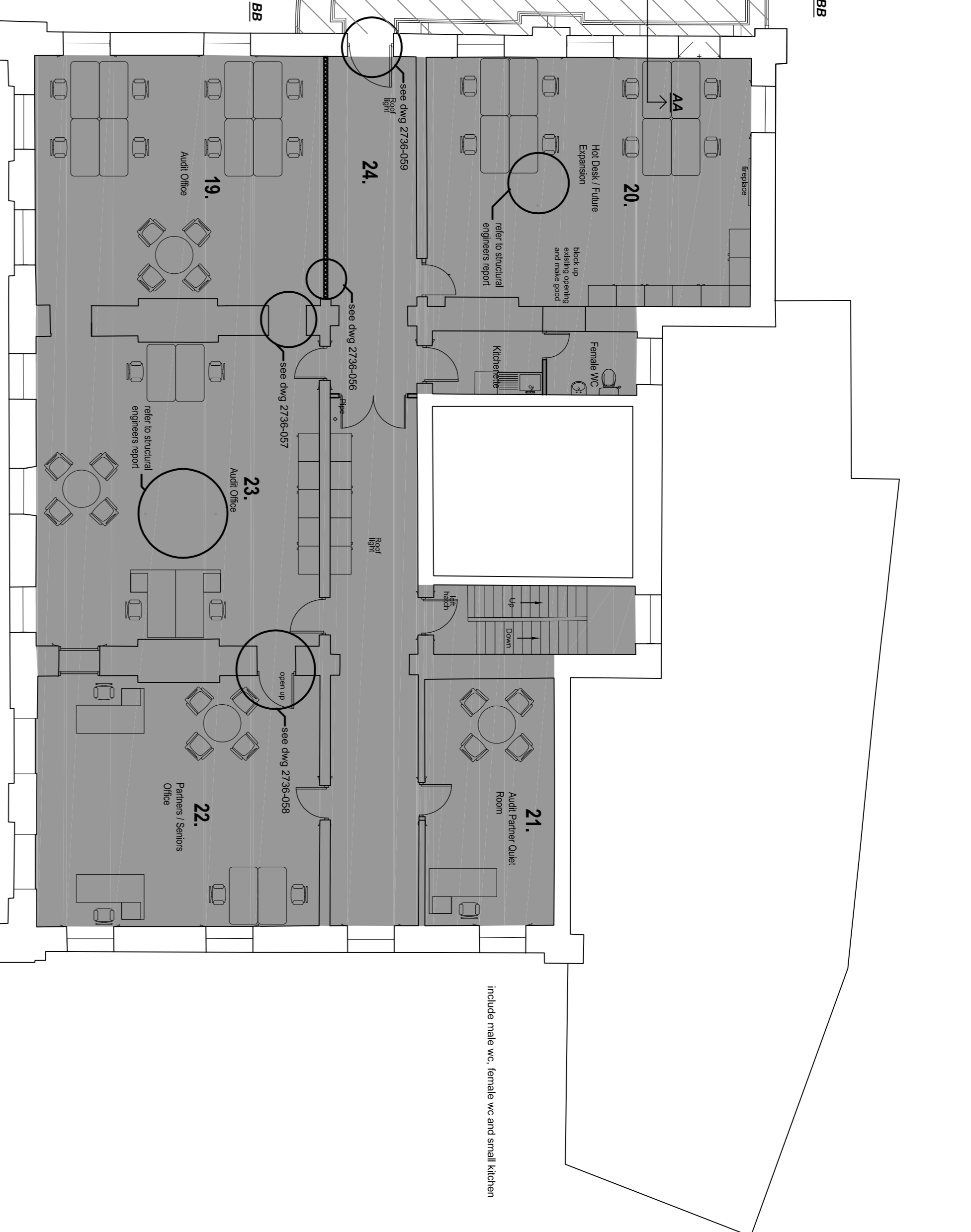


### PROPOSED OPEN PLAN LAYOUT

- Key**
- Office Suite Five - Approx 240m<sup>2</sup>
  - Position of flat roof above

N.B. INTERNAL LAYOUTS SHOWN ARE INDICATIVE ONLY. FIT OUT LAYOUT IS SUBJECT TO A FURTHER APPLICATION.

### Proposed Third Floor Plan



Row	Details	Date	Created By
<b>PLANNING</b>			
<b>BROWN HILL HAYWARD BROWN</b>			
CHARTERED ARCHITECTS			
GEORGIAN HOUSE 24 BIRD STREET LICHFIELD STAFFS WS19 6PT			
TEL: 01432 3697 FAX: 01432 4188 email: mail@brownhillhayward.com			
Client	Melbourne Property Services Co Ltd		
Project	St Helen's House - Office Scheme		
Title	Proposed Second & Third Floor Plans		
Scale	1:100/200	Drawn By	Checked By
Date	2/2/17	SP	MW
Drawn By	Checked By	Drawings Number	Revision
SP	MW	Z736-038	1
<small>The copyright of this drawing and design is reserved by the architect and shall remain the property of the architect. No part of this drawing may be reproduced, stored in a retrieval system or transmitted in any form or by any means, electronic, mechanical, photocopying, recording, or by any information storage and retrieval system, without the prior written permission of the architect.</small>			